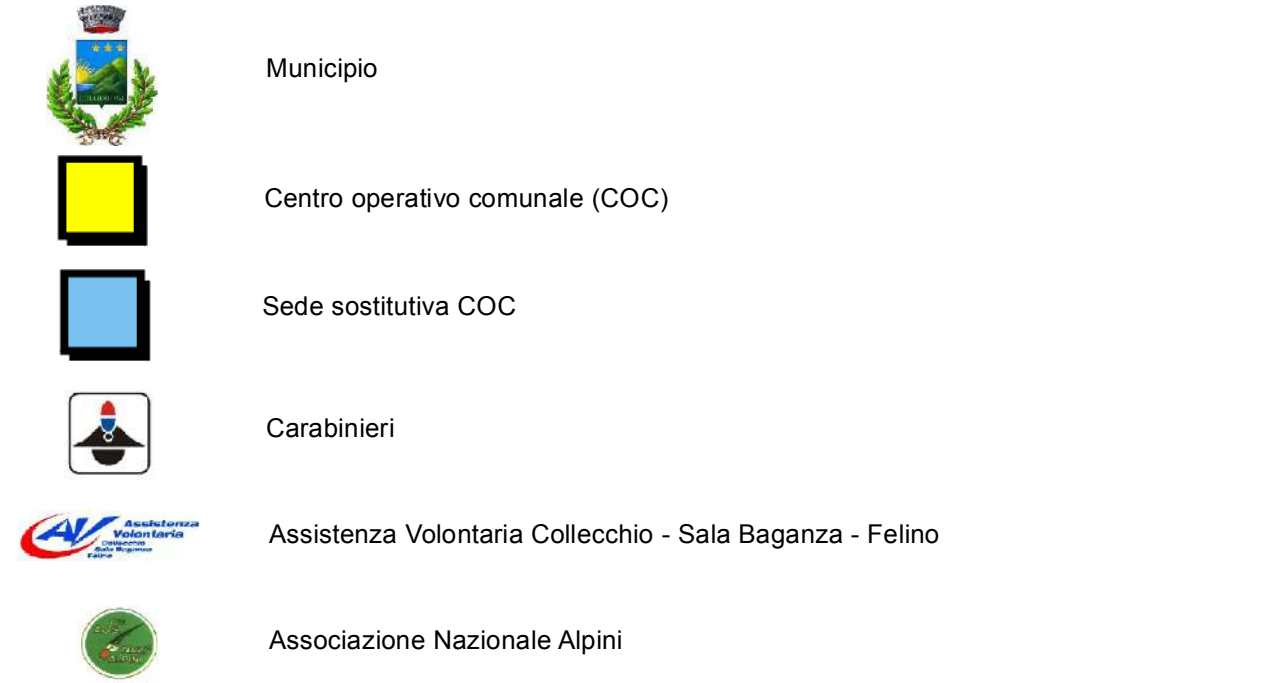


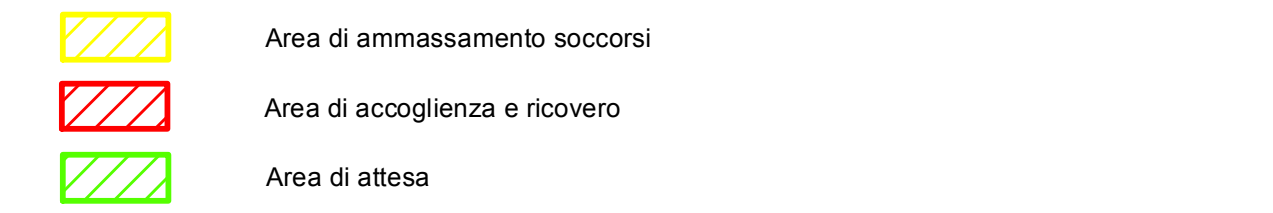


LEGENDA

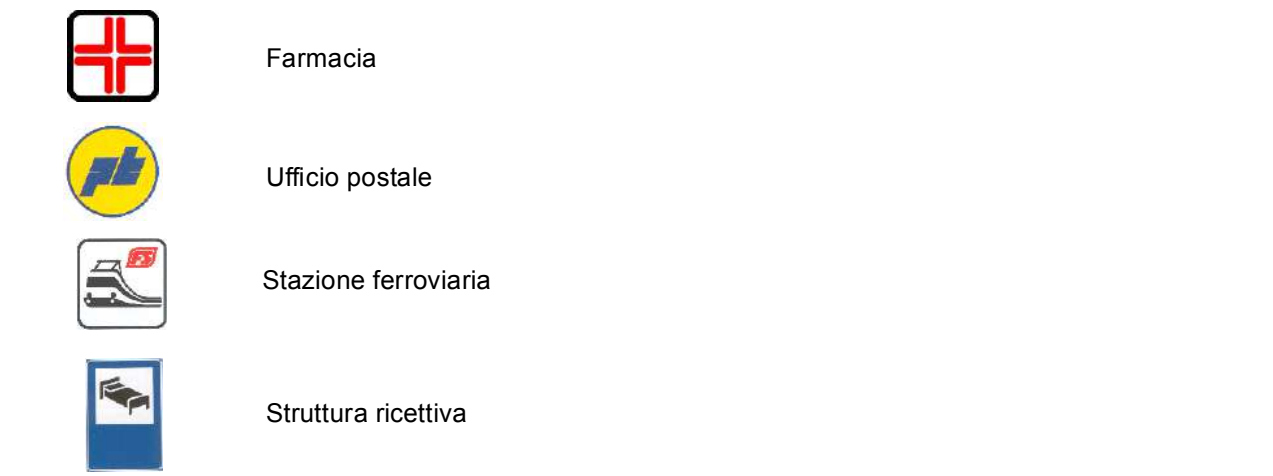
EDIFICI STRATEGICI E STRUTTURE OPERATIVE



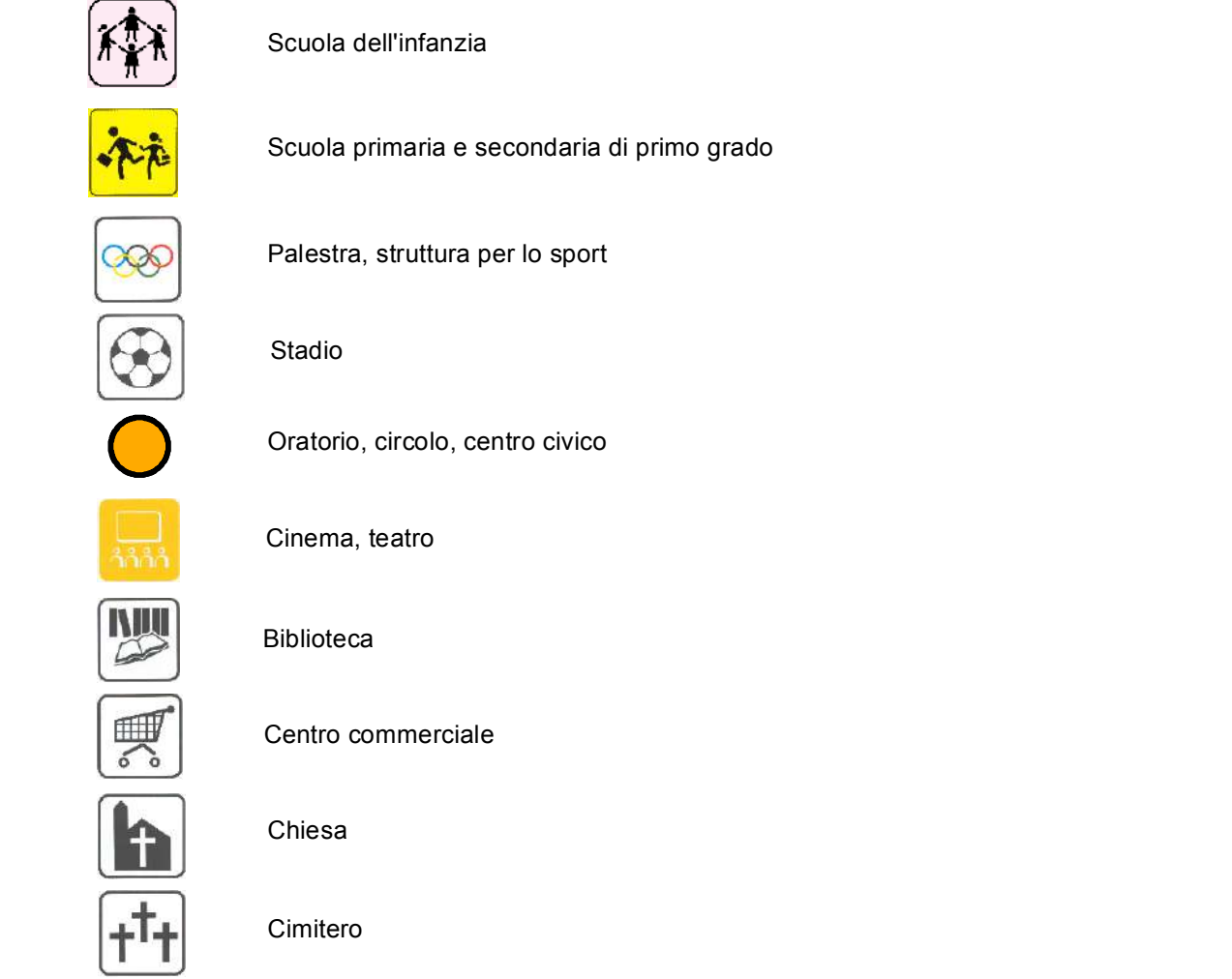
AREE PER L'EMERGENZA



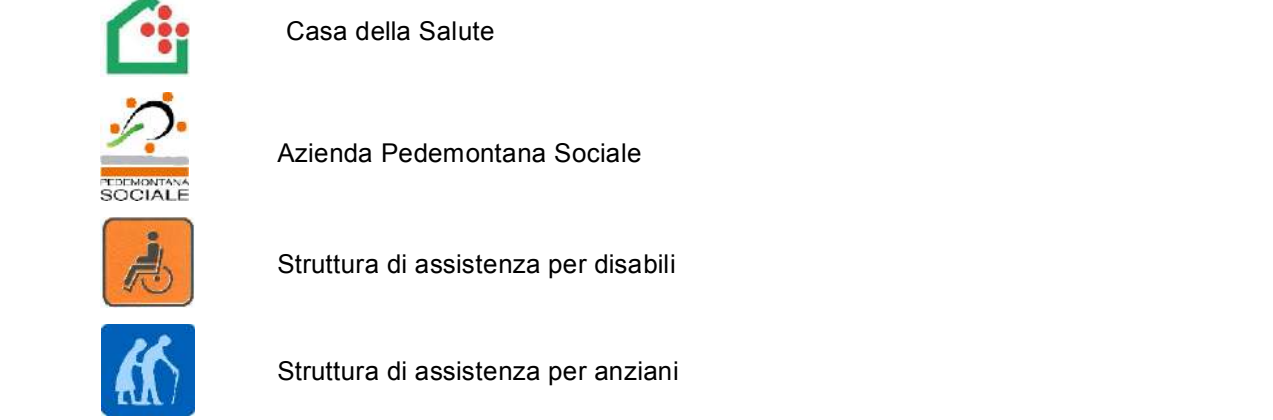
STRUTTURE RICETTIVE E DI PUBBLICA UTILITA'



STRUTTURE SCOLASTICHE, RICREATIVE E DI PUBBLICO AFFOLLAMENTO



STRUTTURE SANITARIE E ASSISTENZIALI



STRUTTURE LOGISTICHE



Fonte dati

Base cartografica
Ortofoto AGEA 2020 RGB - 20cm - Regione Emilia-Romagna

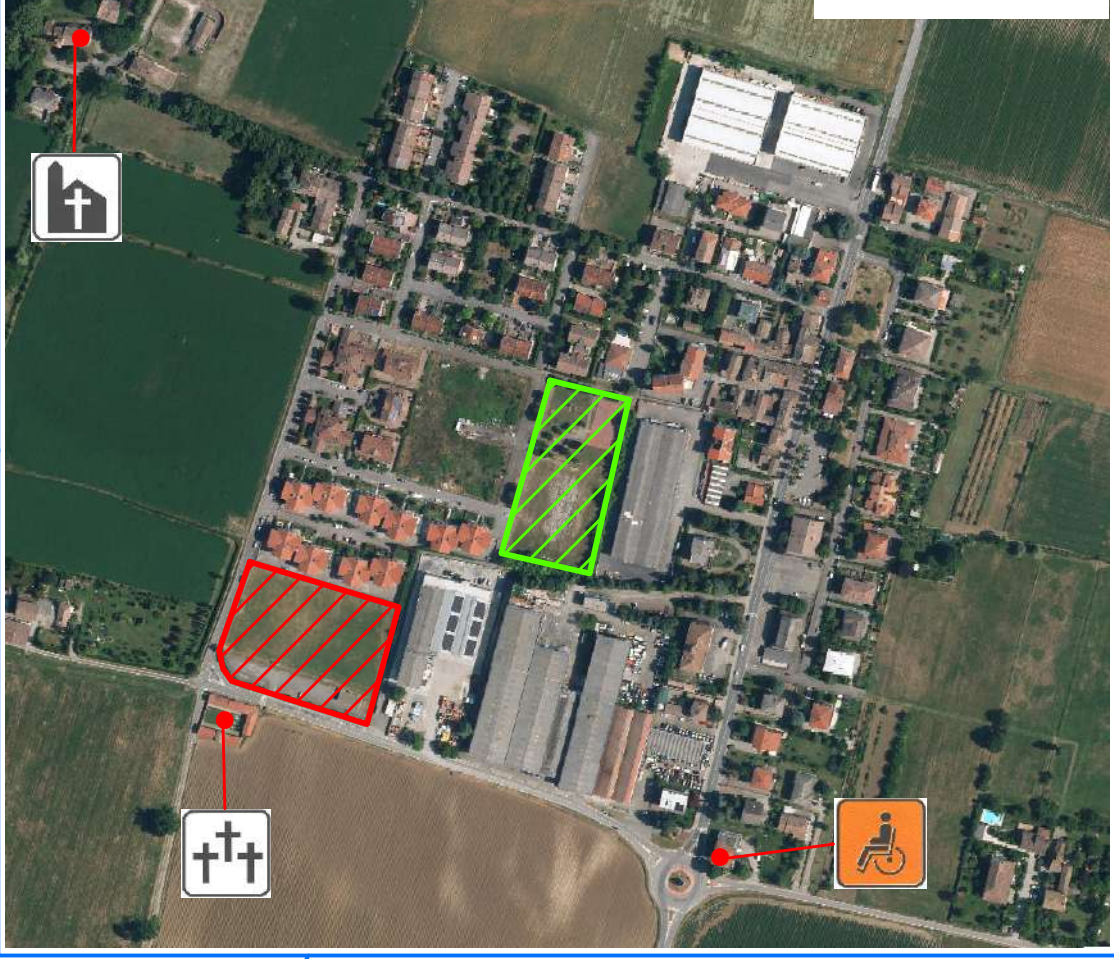
Collaboratori

Dott. Geol. Marco Baldi

PONTE SCODOGNA



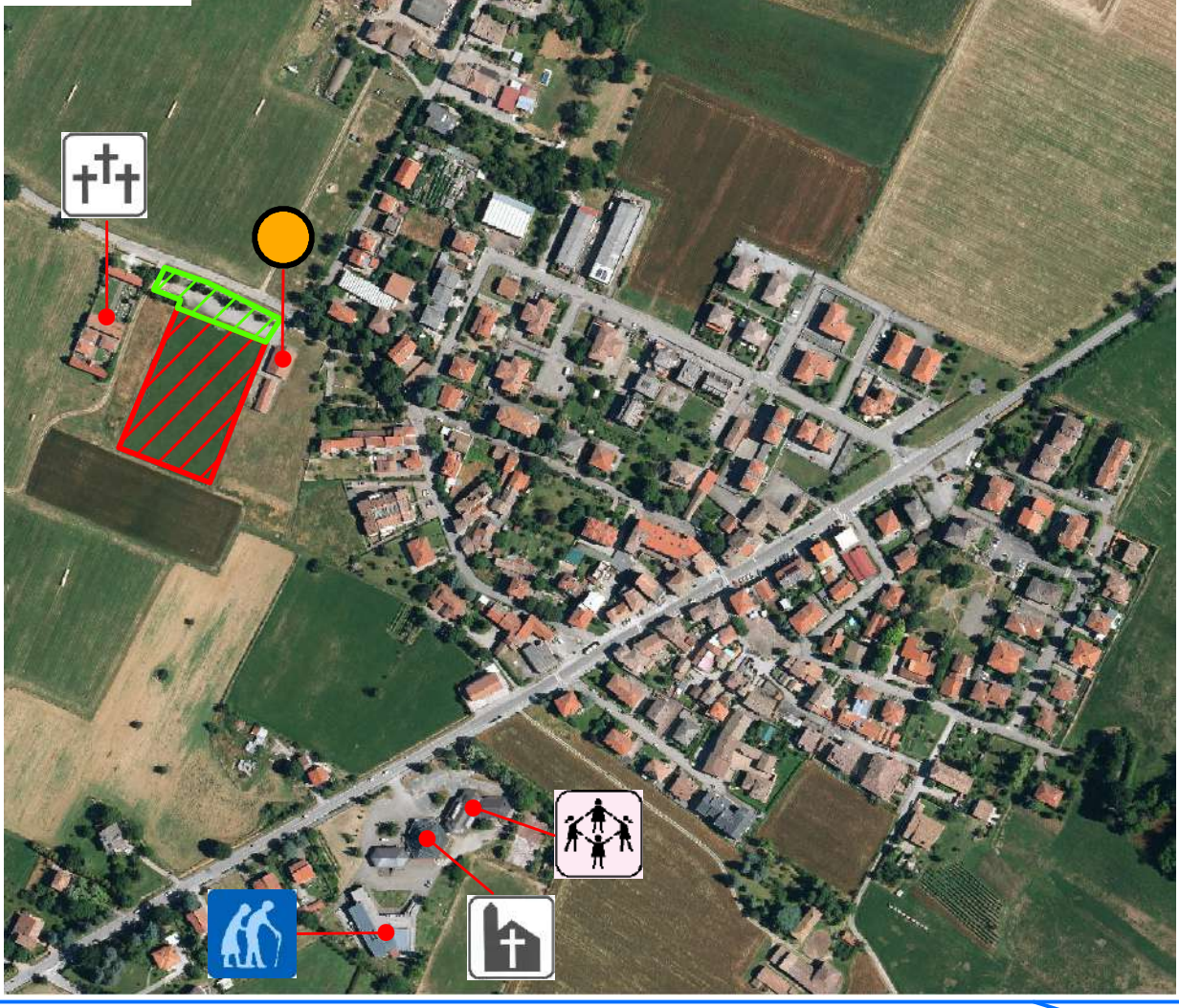
MADREGOLO



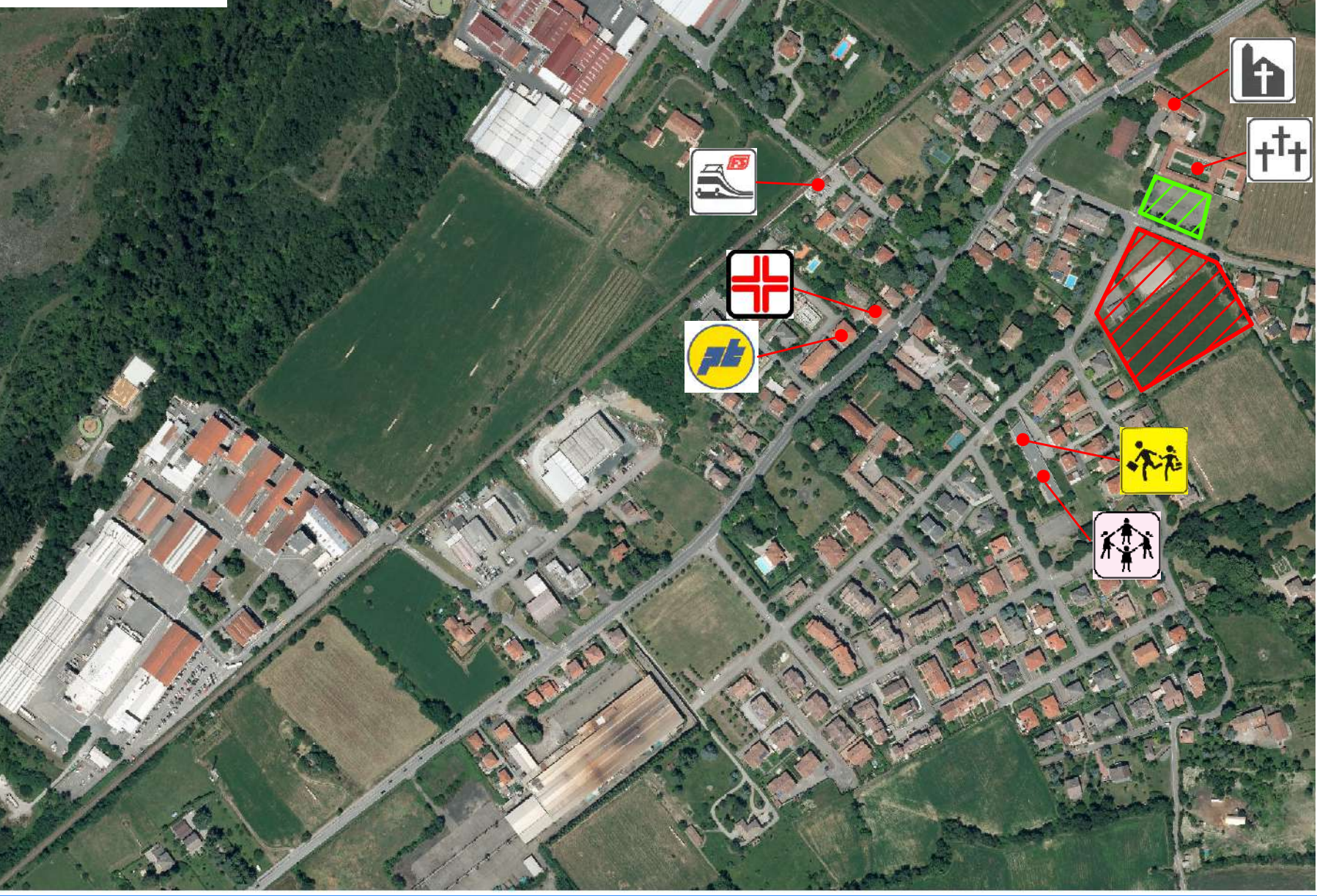
LEMIGNANO



GAIANO



OZZANO TARO



SAN MARTINO SINZANO



COLLECCHIO

